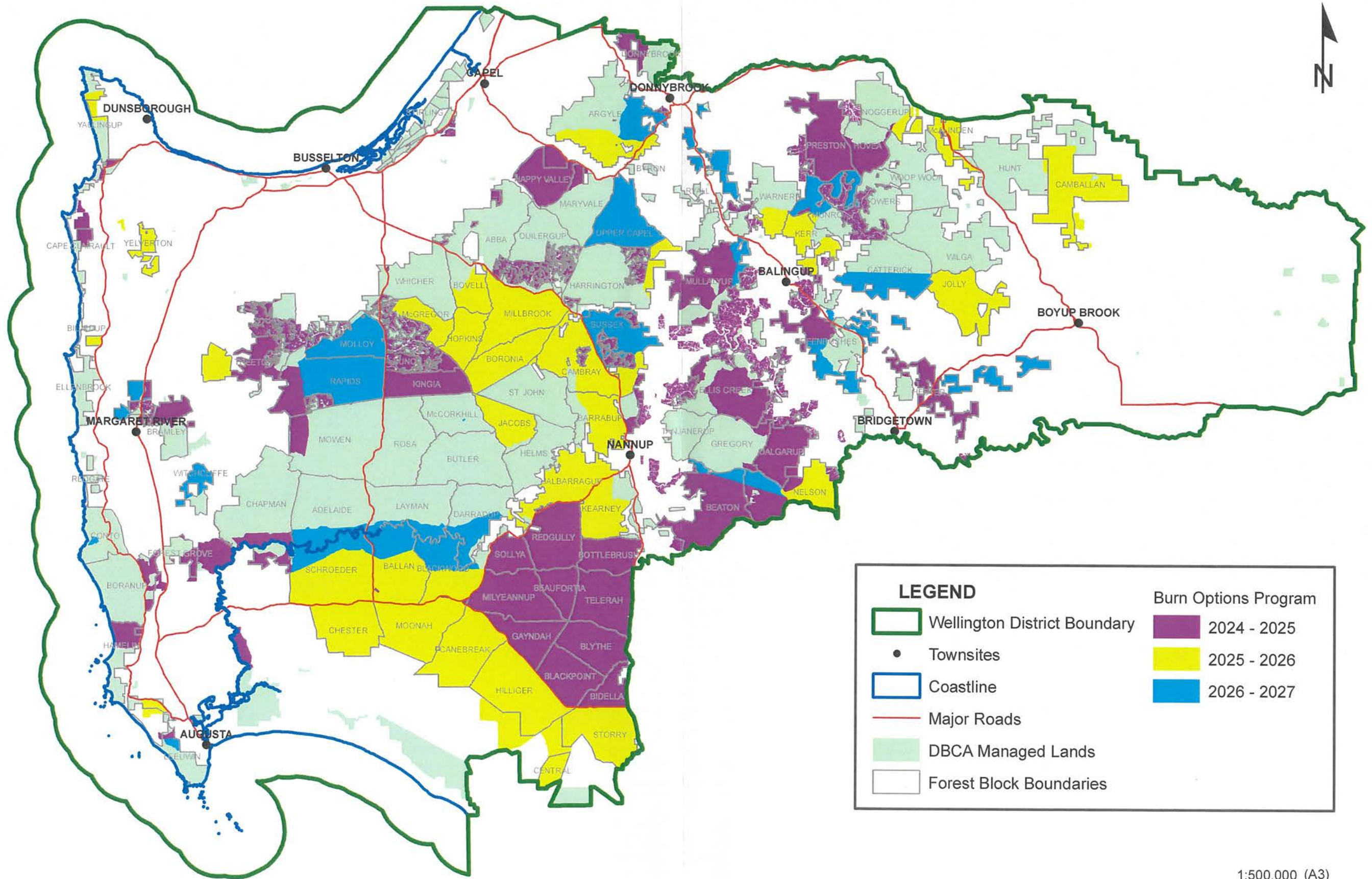


# BLACKWOOD DISTRICT INDICATIVE THREE YEAR BURN OPTIONS PROGRAM

## AS AT APRIL 2025



**LEGEND**

- Wellington District Boundary
- Townsites
- Coastline
- Major Roads
- DBCA Managed Lands
- Forest Block Boundaries

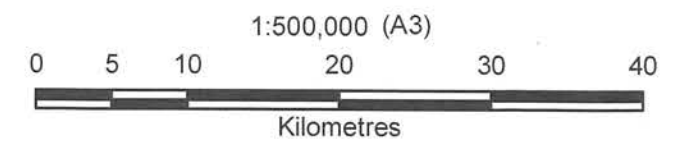
**Burn Options Program**

- 2024 - 2025
- 2025 - 2026
- 2026 - 2027

Produced by the Department  
of Biodiversity, Conservation  
and Attractions

Produced at 09:00am on April 2, 2025

Roads and tracks on land managed by DBCA may contain unmarked hazards and their surface condition is variable.  
Exercise caution and drive to conditions on all roads.  
The Dept. of Biodiversity, Conservation and Attractions does not guarantee that this map is without flaw of any kind and  
disclaims all liability for any errors, loss or other consequence which may arise from relying on any information depicted.



Projection: Universal Transverse Mercator  
MGA Zone 50. Datum: GDA94