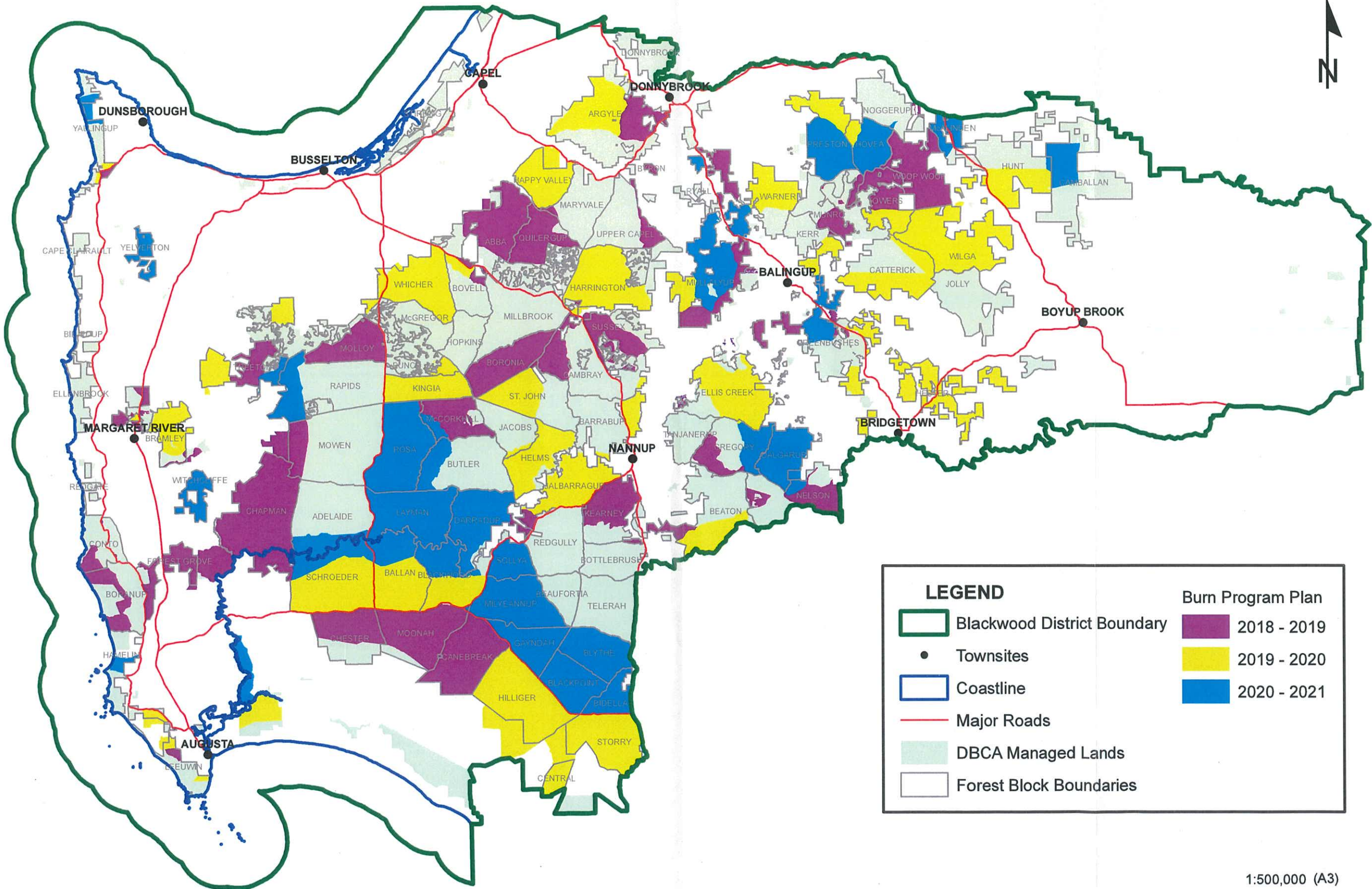
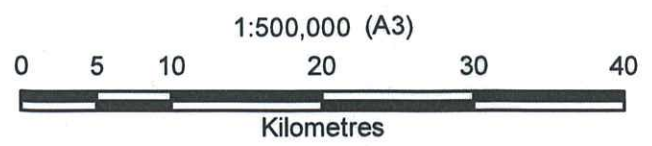


BLACKWOOD DISTRICT INDICATIVE THREE YEAR BURN PROGRAM PLAN AS AT AUGUST 2018



| LEGEND | | Burn Program Plan | |
|--------|-----------------------------|-------------------|-------------|
| | Blackwood District Boundary | | 2018 - 2019 |
| | Townsites | | 2019 - 2020 |
| | Coastline | | 2020 - 2021 |
| | Major Roads | | |
| | DBCA Managed Lands | | |
| | Forest Block Boundaries | | |



Produced by the Department of Biodiversity, Conservation and Attractions
Produced at 2:10pm on August 13, 2018

Roads and tracks on land managed by DBCA may contain unmarked hazards and their surface condition is variable. Exercise caution and drive to conditions on all roads.
The Dept. of Biodiversity, Conservation and Attractions does not guarantee that this map is without flaw of any kind and disclaims all liability for any errors, loss or other consequence which may arise from relying on any information depicted.

Projection: Universal Transverse Mercator
MGA Zone 50. Datum: GDA94